



2018-01-25



Appotronics

Appotronics

Appotronics

10% 90%

0° C

40° C

www.appotronics.com



2018-01-25



2018-01-25



EMC
B

WEEE

RoHS

RoHS

RoHS

2018-01-25

)

"X"

RoHS



100V - 240V ~ 50Hz/60Hz

A

5000m

2018-01-25



DLP

GPCB04M

DLP

DMD

RGBCMYW

60000

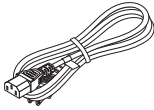
1/3

DVI

DVI



2018-01-25



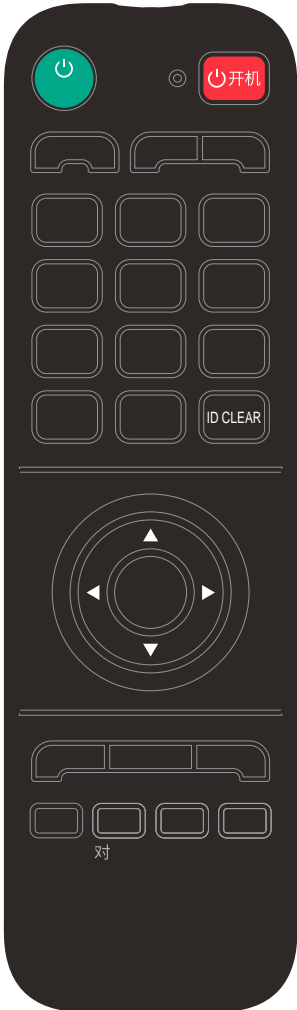


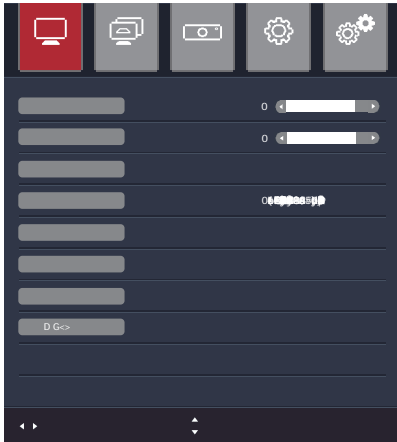
	DLP	DMD
		95%
		IP6X
	0- 40	10- 30
		20% - 80%
		- 10 - 60



2018-01-25

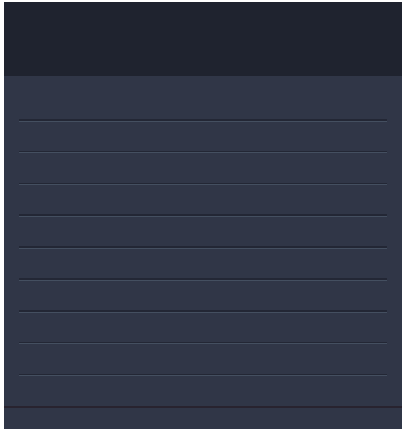
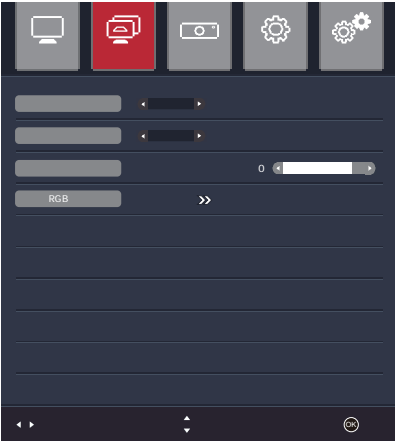






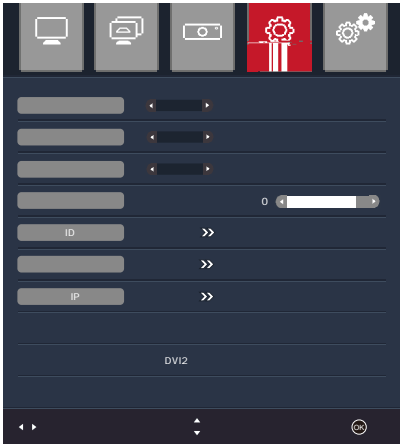


	0- 100
	0- 100
	RGB
	0- 24
	3200K 6500K 7500K 9300K
	0- 255 0- 255 0- 255
	0- 100 0- 100 0- 100
	HSG_DID
	HSG_DDP
MPEG	0- 63



	± 40
RGB	>>





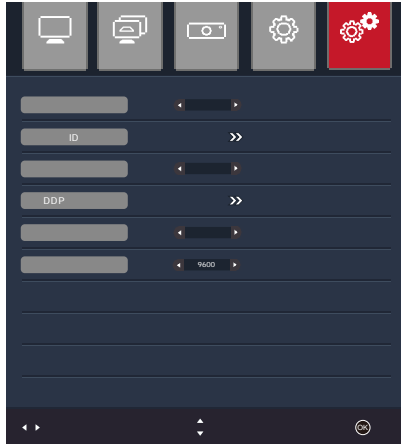


ID	
ID	1- 15 1- 15
	1- 15 1- 15
	0- 200



IP	
IP	IP / IP
IP	IP
MAC	

2018-01-25



ID	>>
DDP	>>
	/ /
	MCU

2018-01-25



遥控ID设置

单元ID	水平: 0	垂直: 0
遥控ID	水平: 0	垂直: 0
请按数字键设定ID		
当ID为0关闭遥控ID功能		
OK 确定	◀▶ 移动	

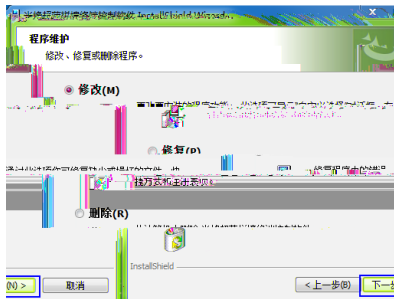
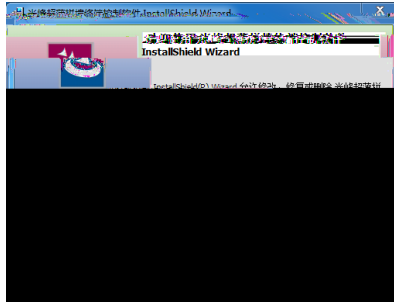
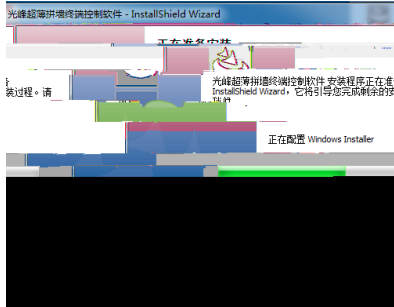
ID		
ID	1 - 15	1 - 15
ID	1 - 15	1 - 15

DDP 电流设置

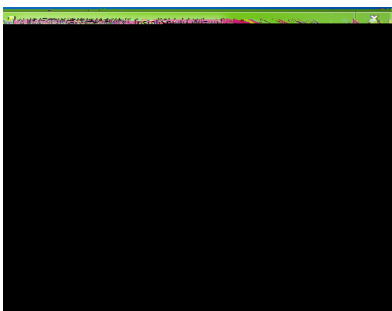
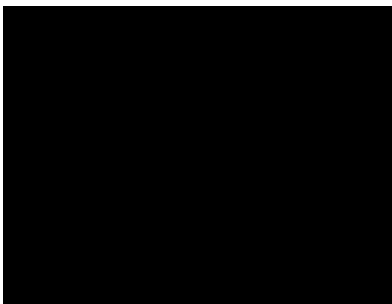
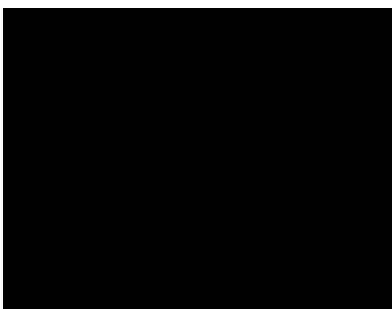
红色:	0
绿色:	0
蓝色:	0
基准电流:	0
◀▶ 调整	OK 确定 ▲▼ 移动

DDP	
	0 - 10
	0 - 10
	0 - 10
	0 - 20

2018-01-25



2018-01-25



业由林

2018-01-25



IP

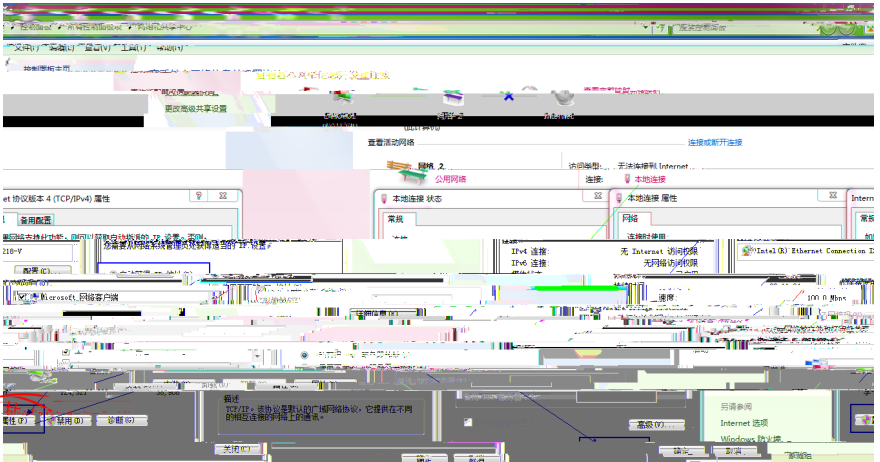
Internet

4 TCP/IPv4)

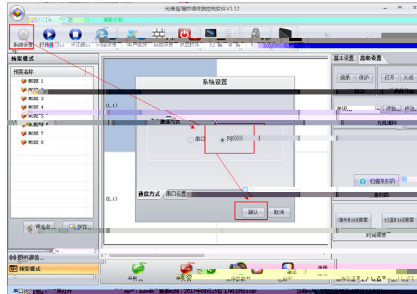
Internet

4

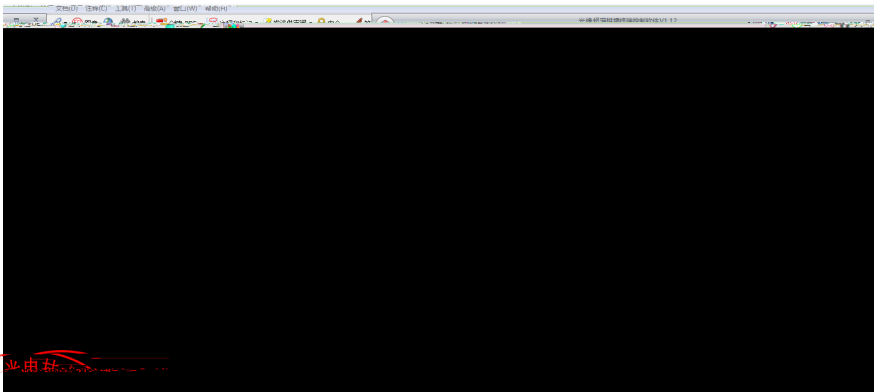
IP



2018-01-25



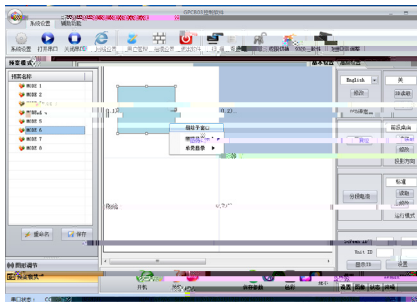
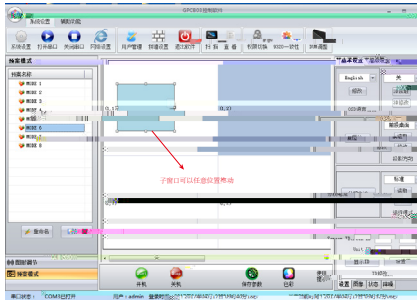
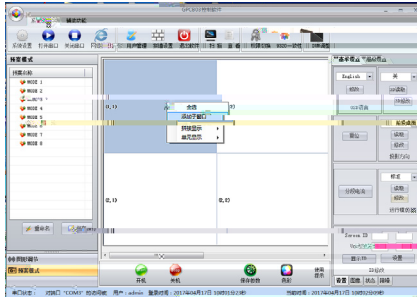
IP
IP



2018-01-25



1,1 2,2

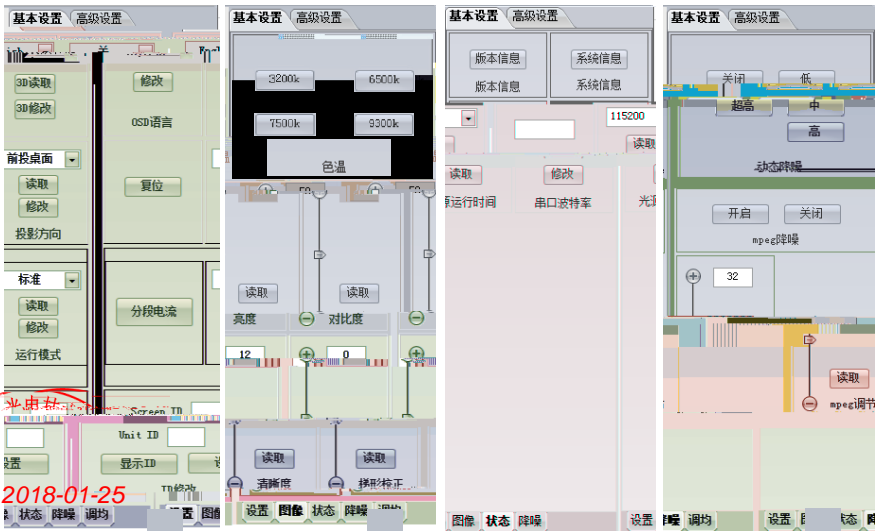


2018-01-25

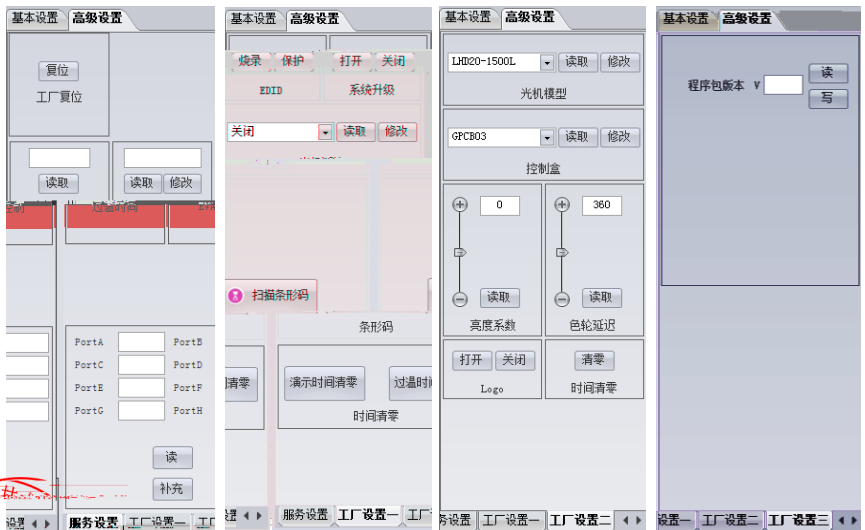


2018-01-25

①	OSD	OSD
②		
③		
④	ID	ID Screen ID Unit ID
⑤	3D	3D
⑥		
⑦		
⑧		
⑨		
⑩		
⑪		
⑫		
⑬		
⑭		
⑮		
⑯		
⑰	MPEG	



①		
②		
③	EVA	
④	EDID	EDID
⑤		
⑥		DDP
⑦		
⑧		
⑨		
⑩		
⑪		
⑫		
⑬		
⑭	LOGO	LOGO
⑮		
⑯		

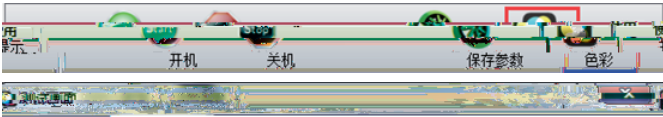
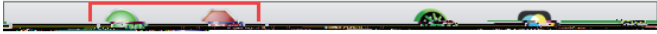


2018-01-25

/

/

/





2018-01-25



2018-01-25

O O C

1089

4

<http://www.appotronics.com>

 P/N D02007000001

Rev03

2018-01-25

Q/GF 001 - 2016